



A lasting symbiosis: how *Vibrio fischeri* finds a squid partner and persists within its natural host

Karen L. Visick^{1,4}✉, Eric V. Stabb^{2,4}✉ and Edward G. Ruby³✉

Abstract | As our understanding of the human microbiome progresses, so does the need for natural experimental animal models that promote a mechanistic understanding of beneficial microorganism–host interactions. Years of research into the exclusive symbiosis between the Hawaiian bobtail squid, *Euprymna scolopes*, and the bioluminescent bacterium *Vibrio fischeri* have permitted a detailed understanding of those bacterial genes underlying signal exchange and rhythmic activities that result in a persistent, beneficial association, as well as glimpses into the evolution of symbiotic competence. Migrating from the ambient seawater to regions deep inside the light-emitting organ of the squid, *V. fischeri* experiences, recognizes and adjusts to the changing environmental conditions. Here, we review key advances over the past 15 years that are deepening our understanding of these events.

Light organ

Symbiotic bioluminescence organ inside the squid *Euprymna scolopes* where *Vibrio fischeri* resides.

Chemoattractant

Nutrient or other molecule to which a bacterium migrates, typically using flagellum-driven motility.

Since humans first realized they were affected by the presence of microscopic organisms within their bodies, most of our focus has been directed on those few microbial species that cause disease — what they are, what their impact is and how to eliminate them. Little interest was shown in those bacteria found to be associated with a healthy body, and which were considered only ‘commensals’, an ecological term the meaning of which specifically connotes their lack of importance to the host. This viewpoint now seems as naive as a belief in spontaneous generation. The importance of microorganisms to their hosts was well illustrated by the difficulties that pioneering scientists had to overcome to establish the first viable germ-free animals. Moreover, we now recognize that, when compared with pathogens, there are a much greater number and greater complexity of beneficial microorganisms associated with our bodies, as is the case for virtually all animals and plants. This rapidly expanding realization of the critical importance of the normal microbiota to organismal health has increased our desire to understand the mechanisms underlying the interactions that create and sustain microbial symbioses with eukaryotic partners. In response to such an intellectual frontier, scientists have always turned to model systems in which they can more easily address fundamental questions the answers to which can be broadly applied to many other organisms, including humans. Such ‘simple’ model organisms as *Escherichia coli*, *Caenorhabditis elegans* and *Drosophila melanogaster* were made famous for their basic, and critical, contributions to the fields of biochemistry, genetics and development. Now, as

the revolution in microbiome research expands, established models of symbiosis are leading the way, and new models are emerging and being developed¹.

One such well-studied animal–bacterial symbiosis is the light organ association between the squid *Euprymna scolopes* and its bioluminescent bacterial partner *Vibrio fischeri* (also known as *Aliivibrio fischeri*). This highly species-specific symbiosis begins when a newly hatched juvenile squid emerges into seawater containing planktonic cells of *V. fischeri*². These cells form an aggregate on the surface of the juvenile’s nascent light organ (FIG. 1) and specifically induce host activities, including those that release a chemoattractant from the pores on the surface³. Within 1–3 hours⁴, the bacteria detach from the aggregate, migrating through surface pores, down a duct, across an antechamber and into the epithelium-lined crypts⁵, where a few founding cells will grow into a population of several hundred thousand cells. This dense population induces a visible bioluminescence, which the adult squid uses to avoid predation during its nocturnal activity⁶. Each morning at dawn, the host expels almost all of the symbiont population into the surrounding seawater^{2,7}; the remaining bacteria repopulate the crypts and are ready to produce light by nightfall. Meanwhile, the vented bacteria cycle through the environment, perhaps in other as yet unknown niches, until they or their progeny colonize the light organs of other *E. scolopes* hatchlings.

The diurnal rhythmic venting activity of the squid continues as the host develops into maturity, and until its death, which in laboratory aquaria occurs after about

¹Department of Microbiology and Immunology, Loyola University Chicago, Maywood, IL, USA.

²Department of Biological Sciences, University of Illinois at Chicago, Chicago, IL, USA.

³Pacific Biosciences Research Center, Kewalo Marine Laboratory, University of Hawai‘i at Manoa, Honolulu, HI, USA.

⁴These authors contributed equally: Karen L. Visick, Eric V. Stabb.

✉e-mail: kvisick@luc.edu; estabb@uic.edu; eruby@hawaii.edu

<https://doi.org/10.1038/s41579-021-00557-0>

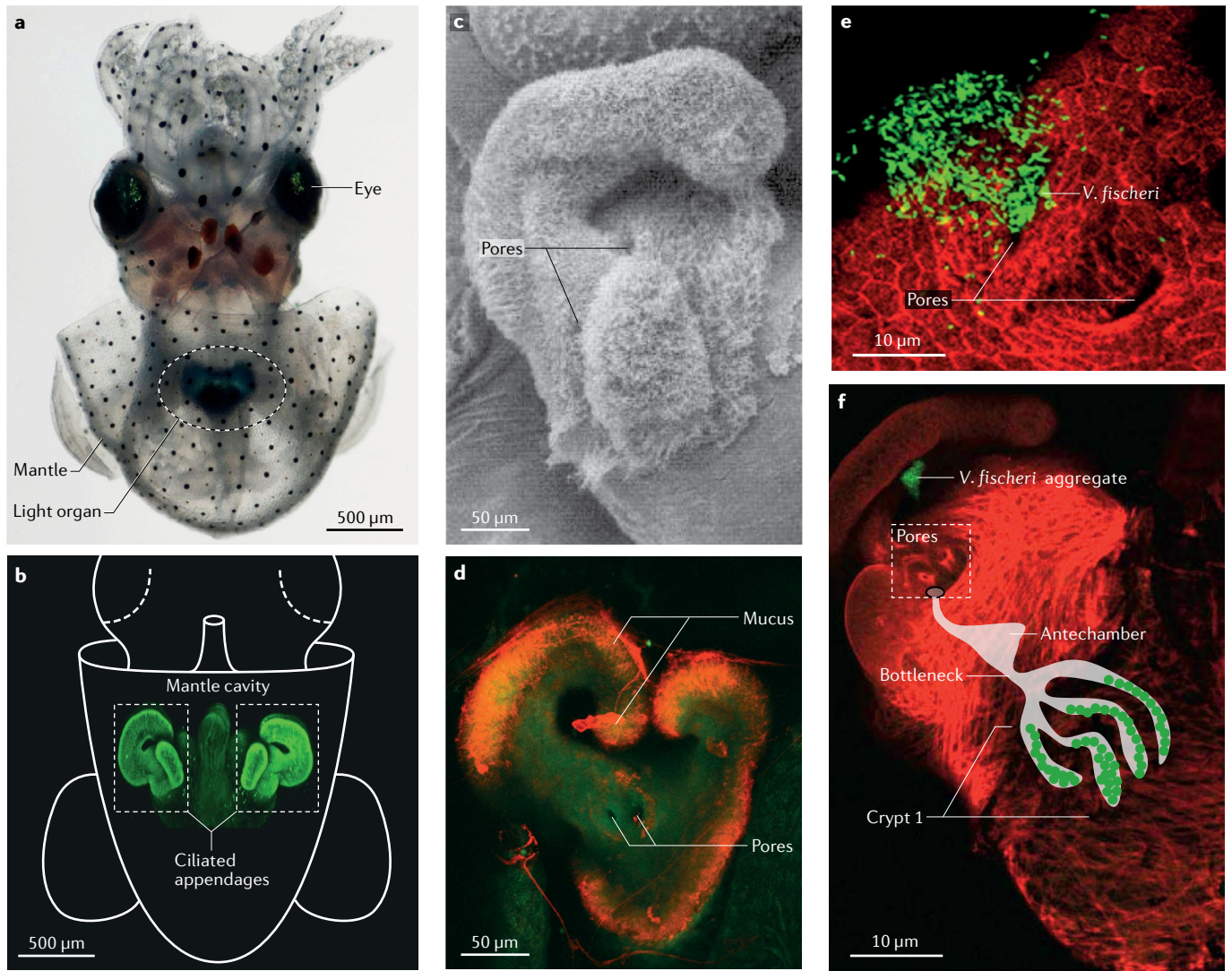


Fig. 1 | The juvenile *Euprymna scolopes* light organ. a | The light micrograph shows the nascent light organ (circle), which is located in the mantle cavity of a newly hatched squid. **b** | A confocal image of the two pairs of ciliated appendages emerging from the outer surface of the light organ (in green); the image is embedded in an outline of the animal's body. **c** | A scanning electron micrograph of one side of the organ showing its ciliated surface and the position of two of the three pores found at the base of each pair of appendages. **d** | A confocal micrograph showing the mucus (stained red) that covers the ciliated surface soon after hatching. **e** | A close-up confocal image indicating how mucus production and the flow fields created by the cilia capture *Vibrio fischeri* cells (labelled with GFP) present in the seawater and direct them to a zone directly above the

pores, where they form loose aggregates. **f** | After a few hours, the aggregate (green in this confocal image) undergoes chemotaxis to the three pores (square), and migrates into one of three interior ducts, each leading to an antechamber, through a bottleneck and into a crypt. Once in the crypts, the *V. fischeri* cells proliferate and induce luminescence. This interior pathway to crypt 1 is indicated as a cartoon. Parts **a** and **e** adapted with permission from REF.⁵, Annual Reviews. Part **b** adapted with permission from REF.²⁵, PNAS. Copyright (2000) National Academy of Sciences, USA. Part **c** republished with permission of University of Chicago Press, from REF.¹⁵⁷, *The Biological Bulletin*, Doino, J. A. & McFall-Ngai, M. J. **189**, 3 (1995); permission conveyed through Copyright Clearance Center, Inc. Parts **d** and **f** courtesy of M. J. McFall-Ngai, University of Hawaii.

9 months. Throughout the initiation of, accommodation to and persistence in the symbiosis, the species specificity and activity of the bacterial population must be maintained, and the developmental and immunological responses of the host need to be regulated⁸⁻¹⁰. To achieve these intricate, intertwined goals, the two partner species have evolved a complex system of physiological and biochemical communication, drawing upon and modifying pre-existing adaptations and capabilities such as chitin-driven fermentation, bacterial chemotaxis to specific nutrients and the host haemocyanin's Bohr effect (see the companion article by Nyholm and

McFall-Ngai¹¹), to perform new roles^{3,12,13}. Identifying the molecular language of this communication has revealed not only adaptations unique to this association (for example, luminescence) but also modes of signalling (for example, microorganism-associated molecular patterns (MAMPs), circadian rhythms and non-coding RNA)^{9,14,15} that were subsequently, or are likely to be, found to occur between mammals and their normal microbiota^{16,17}.

More than a decade ago, a previous contribution to *Nature Reviews Microbiology*¹⁷ focused on the impact that the application of bacterial genetic approaches

Mantle cavity

The cavity inside *Euprymna scolopes* containing organs, including the light organ, loosely covered by a hood-like mantle and exposed to seawater.

Biofilm matrix

The collection of secreted polysaccharides, proteins and other substances produced by and surrounding a group of bacteria that functions to promote attachment and provide protection.

was having on our understanding of the squid–vibrio association as well as several other emerging models of host–bacterium mutualism. In this Review, we update this analysis with new findings and conclusions regarding the squid–vibrio system from the symbiont’s perspective. This contribution was preceded by several excellent reviews of the association (see, for example, REFS^{18–22}) and accompanies a contribution (see REF.¹¹) that describes recent advances in understanding the squid–vibrio symbiosis from the host’s perspective.

Events at the light organ surface

Initial engagement between the symbiont and its host occurs when ambient seawater containing *V. fischeri* cells is drawn into the mantle cavity of a juvenile squid (FIG. 1), where the bacteria come into contact with host-derived mucus covering the surface of the light organ. There, the activities of two types of cilia (‘long’ and ‘short’) on the nascent organ combine to direct the flow of bacterium-sized particles in the seawater into stagnant zones above pores in the light organ surface²³ (see REF.¹¹). Within this zone, the bacteria attach to the cilia²⁴ and form a cohesive cluster known as an aggregate, or symbiotic biofilm²⁵, a critical colonization behaviour (see, for example, REF.²⁶). The aggregates can be from tens to

thousands of bacteria in number, depending on the strain of *V. fischeri* and its ambient concentration²⁷. Intensive study^{28,29} has shown that this biofilm, and efficient colonization, depends on an exopolysaccharide (Syp-PS) that is synthesized and exported by proteins encoded in the 18-gene *syp* locus^{30,31}. Although most biofilm studies have focused on Syp-PS, *V. fischeri* produces at least one other polysaccharide, cellulose, that contributes to in vitro biofilm formation; however, its influence on the symbiosis is unclear^{32–35}. In addition, other secreted components may contribute to the biofilm matrix, including Bmp proteins³⁶ and outer-membrane vesicles³⁷.

Syp-PS production is controlled at the level of transcription by a network of two-component regulators (sensor kinases and response regulators). Sensor kinase proteins sense and relay (via phosphorylation) information about the environment to response regulator proteins, which then control bacterial behaviour. Because the signal or signals that modulate biofilm formation are generally unknown, for experimental studies biofilm formation is typically induced by overexpression of positive regulators or disruption of negative regulators. For example, overexpression of the sensor kinase RscS is sufficient to induce *V. fischeri* biofilm formation, contingent on the response regulator SypG, the direct activator of *syp* transcription^{26,38–41} (FIG. 2). RscS also depends on the presence of the sensor kinase SypF⁴². This regulatory scheme is atypical because sensor kinases generally signal directly to a downstream response regulator. Subsequently, it was determined that another sensor kinase, HahK, similarly functions through SypF³⁴. Thus, SypF has an unusual role in integrating sensory information gleaned by itself and other sensor kinases to control SypG and, thus, *syp* transcription and host colonization^{34,42,43} (FIG. 2).

Syp-dependent biofilm formation and symbiotic colonization are inhibited by the response regulator BinK^{44,45}. Loss of *binK* alone is sufficient to promote *syp* transcription and *syp*-dependent biofilm formation in vitro, but only when concentrations of Ca²⁺ typical in seawater are present³⁴. This combination of factors (lack of BinK and addition of Ca²⁺) permitted a more natural investigation of the regulation of biofilm formation (without artificial overexpression) and, indeed, facilitated the identification of HahK as a key biofilm regulator³⁴. How BinK and Ca²⁺ control *syp* transcription remains unknown. Syp-PS production is also controlled post-transcriptionally, via the response regulator SypE. This response regulator lacks a DNA-binding domain, instead controlling the activity of its target, SypA, via serine phosphorylation/dephosphorylation^{46,47} (FIG. 2). Unphosphorylated SypA promotes biofilm formation, while phosphorylated SypA is inactive and unable to promote biofilm formation or colonization⁴⁷. The chaperone protein DnaJ may also function in this pathway: while expressing normal levels of *syp* transcription, a *dnaJ* mutant fails to produce Syp-PS or biofilms⁴⁸. Intriguingly, *syp* is conserved in most *Vibrio* species³¹, and *sypA* from the pathogens *Vibrio vulnificus* and *Vibrio parahaemolyticus* could partially complement a *V. fischeri sypA* mutant⁴⁹. Thus, the mechanisms uncovered in the squid symbiosis may have application

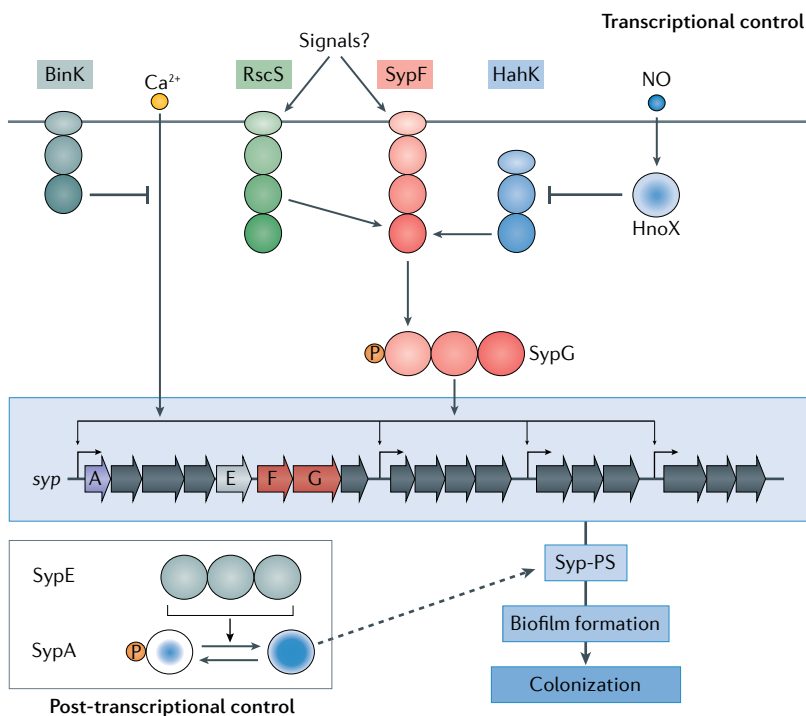


Fig. 2 | Regulatory pathways controlling the production of Syp-PS, leading to biofilm formation and colonization. The sensor kinases RscS and HahK function upstream of the sensor kinase SypF, which activates, via phosphorylation, the response regulator SypG. In turn, SypG activates transcription of the *syp* locus, resulting in production of the structural proteins necessary for the synthesis of the exopolysaccharide Syp-PS. The signals sensed by RscS and SypF are currently unknown (indicated by the question mark). Nitric oxide (NO) is recognized and bound by HnoX, which inhibits the *syp* activator HahK, and thus *syp* transcription. Calcium is a positive signal inducing *syp* transcription that is inhibited by the sensor kinase BinK. The response regulator SypE, which phosphorylates and dephosphorylates SypA, further regulates Syp-PS production post-transcriptionally. Unphosphorylated SypA promotes Syp-PS production through an unknown mechanism.

to understanding biofilm formation and infection by human pathogens as well.

Historically, *V. fischeri* strain ES114 has been the principal strain used to study the squid–vibrio symbiosis, but new insights are being gleaned with additional isolates (BOX 1). For example, the positive regulator *rscS*, which is required for colonization by ES114 (REF.⁴¹), is either absent or frame-shifted in some colonization-competent isolates, indicating that these strains likely have evolved other mechanisms to induce *syp* transcription and/or control post-transcriptional processes⁵⁰. Notably, some isolates, termed ‘dominant’, readily outcompete ES114 for colonization⁵¹. For at least one, MB13B2, dominance seems to coincide with hyperproduction of Syp-PS, as this strain produces substantially larger *syp*-dependent aggregates, and does so faster than ES114 (REF.²⁷). MB13B2 contains a frame-shifted *rscS* allele⁵⁰, and thus understanding how *syp* regulation is altered in different

strains of *V. fischeri* will be key to determining the diversity of mechanisms by which colonization competence is achieved.

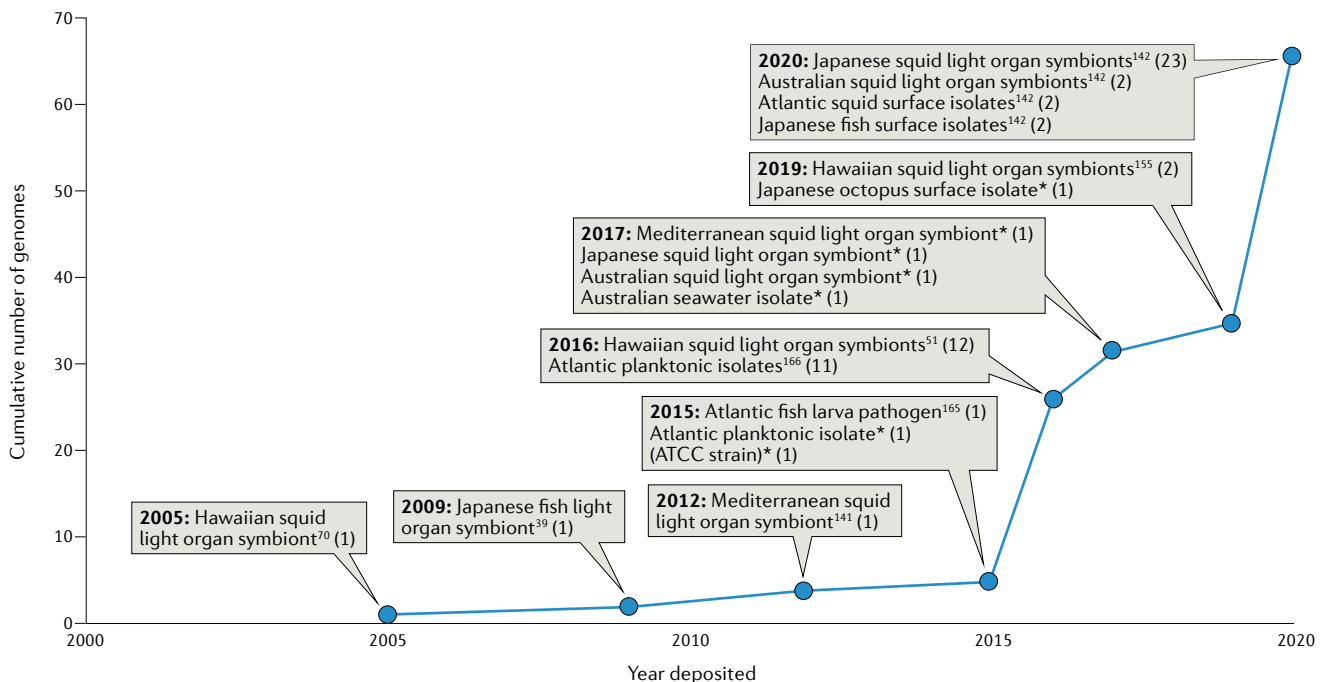
Despite hyperaggregation exhibited by both MB13B2 (REF.²⁷) and *rscS*-overproducing ES114 (REF.²⁶), these (and wild-type) strains ultimately disperse from their symbiotic biofilms to migrate into the light organ. The mechanisms of dispersal remain poorly understood, because it is rare to visualize this transient behaviour in squid, it has not been observed in laboratory culture and it is hard to differentiate mechanisms that promote biofilm formation from those that decrease dispersal, and vice versa. However, recent work has provided the first mechanistic insight by identifying a homologue of the *Pseudomonas* protease LapG⁵² as responsible for cleaving a large adhesin from the *V. fischeri* cell surface, permitting dispersal⁵³. The activity of LapG is controlled by the inner-membrane protein LapD. Loss of LapD results in

Box 1 | Genomics and molecular genetics

The availability of the genome of *Vibrio fischeri* (strain ES114) in 2005 greatly accelerated reverse genetics studies of specific genes, typically chosen through comparisons with those important in pathogens⁷⁰. The subsequent determination in 2008 of the genome for strain MJ11, a fish light organ symbiont that fails to colonize squid, permitted a more symbiosis-focused comparison and revealed the absence of a single, key regulator in the fish symbiont³⁹. More recently, the genomes of numerous other *V. fischeri* symbionts have been reported (see the figure) and contain, in some cases, ~250 kb of additional sequences not found in ES114 (REFS^{50,51,156}); the distinct phenotypes of these isolates are prompting investigations of factors that permit superior colonization. Whole-genome sequencing has also facilitated identification of point mutations, ushering in a new era of evolutionary biology. For example, experimental evolution experiments in which the non-colonizing MJ11 acquired the ability to colonize *Euprymna scolopes* revealed the importance of a negative regulator in preventing colonization⁴⁵.

At the same time, other advances have facilitated labelling and genetic manipulation of *V. fischeri*. Study of pES213, a native *V. fischeri* plasmid, permitted the development of stable, pES213-based expression vectors and reporter plasmids^{79,158}. The application of a hyperactive Tn5 transposon enabled phenotype assessments via the generation of random mutants^{159,160}. Another major genetic advance came with the finding that ES114 could be induced to take up DNA from the environment, and recombine it into the genome¹⁶¹. This ability to induce DNA uptake, combined with the use of new tools that facilitate mutant construction and complementation, has greatly accelerated the rate at which putative symbiosis factors can be investigated and confirmed through approaches such as ‘backcrossing’^{162,163}. It has also facilitated deletion mapping of mutant derivatives¹⁶⁴. Finally, the ability to interrogate the symbiosis has been advanced by other new approaches, including promoter probe¹⁰² and insertion sequencing⁴⁸ tools.

The geographical and biological sources of the isolates, as well as the number of strains sequenced, are indicated. Almost all the sequences are draft genomes^{39,51,70,141,142,156,165,166}.



*These sequences were deposited in GenBank without an associated publication.

cells with an increased ability to disperse, a phenomenon that seems to delay symbiotic initiation. Because the lack of LapD does not prevent colonization, it is clear that other dispersal mechanisms must be in place. Additional insights may be gained from conditions or mutations that alter aggregate size (see, for example, REF.⁵⁴). For instance, it is possible that dispersal is facilitated by squid-produced nitric oxide (NO) found on the light organ surface^{54,55}. Consistent with this possibility, addition of a NO synthesis inhibitor causes the formation of larger aggregates⁵⁵ and could restore aggregation to a mutant deficient in Hmp, which eliminates NO⁵⁶. NO is recognized and bound by HnoX, which in turn inhibits the *syp* activator HahK. This results in the downregulation of Syp-PS production (FIG. 2), thereby potentially facilitating dispersal^{57,58}. These observations suggest that other factors⁴⁸ or biosynthetic capabilities⁵⁹ are necessary to orchestrate either the production of or a timely exit from the symbiotic aggregate.

Beyond the light organ surface

Chemotaxis and motility. Many horizontally transmitted symbionts are believed to use chemotaxis to find target tissues within their respective hosts⁶⁰. For instance, the migration of *V. fischeri* cells from the aggregate to their ultimate destination in the deep crypts depends on bacterial motility and chemotaxis (see, for example, REFS^{25,61–65}). *V. fischeri* produces a tuft of sheathed flagella at one pole of the cell, and magnesium in the environment enhances that production^{66,67}. Intriguingly, these flagella are largely lost from symbionts in the crypts, indicating that internal conditions signal the formation of non-motile cells⁶⁷. A large-scale, unbiased search for factors important for motility yielded both genes previously established as required for flagellum biosynthesis and a number of novel genes⁶¹. Of note, this work identified VF_1491, which seems to function in chemotaxis, and the flagellum structural components FlgO, FlgP and FlgT. These latter proteins are now known to contribute to the scaffolding structure that permits the flagellar motor to produce the high torque necessary to propel migration through high-viscosity environments such as mucus^{21,68}. Confirming the findings of previous smaller-scale studies, non-motile mutants were unable to colonize, likely because they could not reach the crypts, whereas mutants with diminished motility exhibited decreased efficiency of colonization⁶¹. In addition, mutants defective for the chemotaxis regulators CheA and CheZ colonized only ~50% of animals when presented at a dose that enabled full colonization by the wild type, supporting the findings of earlier studies (see, for example, REF.⁶⁹) that suggested a role for chemotaxis in effective colonization.

Recent work describing the cilium-driven flow of fluids around the light organ surface revealed that these dynamics could cause an accelerated formation of chemical gradients that may permit *V. fischeri* to undergo chemotaxis into the light organ²³. However, defining chemotactic mechanisms in *V. fischeri* is particularly challenging because this organism encodes ~43 chemoreceptors^{61,70}. Initial investigations into the roles of 19 of these chemoreceptors revealed the function

of only one, VfcA, which recognizes serine as well as certain other amino acids⁶¹. Subsequently, VfcB and VfcB2 were shown to recognize short-chain fatty acids such as propionate and butyrate⁷¹. However, none of these chemoreceptors seems to be important during the early stages of symbiosis. By contrast, *V. fischeri* also undergoes chemotaxis towards *N*-acetylneuraminic acid and chitin oligosaccharides, two squid-produced molecules that could promote the recruitment of *V. fischeri*^{69,72} (see also REF.¹¹). Indeed, efficient entry depends on the ability to recognize a gradient of chitin oligosaccharides: addition of the disaccharide *N,N'*-diacetylchitobiose (chitobiose), but not the monosaccharide *N*-acetylglucosamine, disrupted squid colonization by preventing migration into the duct, while not preventing migration from the aggregate to the pore⁷². This behaviour mimicked that of the colonization-defective *cheA* mutant. Similarly, efficient colonization could also be blocked by interfering with chitobiose production by the squid enzyme chitotriosidase, present in the ducts and pores³. Thus, it seems that early colonization comprises three stages: aggregate formation; migration to the pore; and movement from the pore into the duct in a manner dependent on the recognition of squid-generated chitin oligosaccharides. To date, the chitobiose chemoreceptor or chemoreceptors remain unknown; however, at least four of the genes encoding methyl-accepting chemotaxis proteins in the *V. fischeri* genome encode methyl-accepting chemotaxis proteins that recognize *N*-acetylated sugars such as chitobiose⁷³.

Finally, in addition to promoting chemotaxis-based movement, flagellar rotation seems to indirectly trigger the host immune response. Rotation results in the release of lipopolysaccharide molecules from the flagellar sheath and/or outer membrane, which in turn triggers apoptotic cell death in epithelial cells present on the light organ surface⁷⁴. This apoptosis is part of a programme of tissue remodelling that removes colonization-promoting ciliated structures after successful entry by *V. fischeri* (see later and REF.¹¹) Thus, the role of flagella in symbiosis seems to be multifactorial²¹.

Symbiotic bioluminescence and quorum-dependent regulation.

After colonizing its host, *V. fischeri* induces the *lux* operon, which is responsible for bioluminescence (FIG. 3). Once the animal grows large enough to cast a discernible shadow, this light emission is used by the squid to obscure its silhouette in a camouflaging ‘counter-illumination’ behaviour⁶, and perhaps other behaviours as well⁷⁵. Bioluminescence enables *V. fischeri* to persist in the host^{76,77}; mutants deficient in bioluminescence (dark mutants) initially colonize, but within 2 days their colonization levels begin to diminish relative to those of the wild type. This initial colonization attenuation seems restricted to the largest, early-developing crypts⁷⁸, perhaps because *lux* transcription is delayed in the smaller, later-developing crypts^{79–81}. Although several possibilities have been proposed, the mechanism or mechanisms underlying the contribution of luminescence to colonization persistence remains unknown. Long-term colonization, either with or without a competing wild-type parent, drove a dark mutant to extinction⁸², perhaps

AinS–AinR triggered at moderate cell densities, and jump-starting the downstream LuxI–LuxR system. LuxR, in turn, provides negative-feedback repression of *ainSR*⁹⁰. Consistent with a sentinel role for AinS–AinR, AinR is exquisitely sensitive to its cognate signal at concentrations below 100 pM (REF.⁹¹). This signalling also influences central metabolism^{89,92,93}, and thus exogenous addition of the pheromones, or chemical antagonists, affects not only the initiation of symbiosis but also the subsequent bioluminescence and symbiotic stability⁹⁴.

Although a quorum is necessary to stimulate luminescence, it is not sufficient. Regulators of gene expression and positive-feedback loops mean that both the environment and the recent history of system induction are also critical for the decision to bioluminesce. This context dependence is evident in *V. fischeri* strains isolated from squid, which are far more luminescent in the host than in culture, even at similar cell densities⁹⁵. The combination of environmental regulation and positive feedback could enable *V. fischeri* to launch population-wide behaviours in response to an environmental cue experienced by only a subpopulation^{96,97}. *V. fischeri* cells in different crypts can communicate using their pheromones, potentially transmitting information about the conditions they experience, despite their physical separation⁹⁶. Such environmentally responsive regulators that control luminescence include ArcA, Crp, Fur and PhoB^{96,98–101}, and activating conditions and/or signals include oxidative redox, low iron concentration, low phosphate concentration and the absence of catabolite-repressing sugars (such as glucose). Among these parameters, phosphate availability seems to vary between light organ microenvironments, although this unevenness alone cannot explain the heterogeneity of *lux* expression in the host¹⁰². Although some of these regulatory mechanisms are conserved, the *lux* locus and its regulation seems to have evolved rapidly among *V. fischeri* strains¹⁰³, which suggests distinct selective pressures in different associations.

Nutritional metabolism

The metabolism of *V. fischeri* cells in the symbiotic light organ environment has been studied extensively and reviewed elsewhere^{22,104,105}. Bioinformatic analyses illustrate the metabolic diversity of *V. fischeri* (see, for example, REF.¹⁰⁶), including various catabolic, anabolic, scavenging and energy-generating pathways, and transcriptional profiling shows that *V. fischeri* actively uses much of this genomic potential in the symbiosis¹⁰⁷. Not only is *V. fischeri* physiology in the light organ complex but it also varies temporally both on a diurnal cycle¹⁰⁸ and during maturation of the host^{104,105,109,110} (see REF.¹¹).

Mutant analyses have provided key insights into the nutrients available to symbiotic cells. For example, a pioneering study examining the colonization proficiency of amino acid auxotrophs indicated both that some amino acids were available to symbionts and that de novo amino acid biosynthesis contributed to symbiotic competence⁷. More recently, mutants with a disrupted tricarboxylic acid cycle that required glutamate were found to be proficient in colonization¹¹¹, suggesting this amino acid or a related compound such as glutamine is

available in the light organ. Similar mutant analyses have shown that the host provides symbionts with guanine¹¹² and δ -aminolevulinic acid¹¹³, or related compounds, that can overcome these auxotrophies. A recent comprehensive and groundbreaking insertion sequencing study catalogued an expansive number of mutants and their relative abilities to grow in a rich medium or in the light organ, providing a wealth of evidence with respect to what symbionts do or do not have to produce de novo in the light organ⁴⁸; this study will continue to provide insights that must await additional investigations.

Considerable interest has focused on finding the primary carbon source or sources underpinning symbiont growth, although many questions remain unanswered. *N*-Acetylglucosamine (NAG) and to a lesser extent glucose have been areas of focus, in part because NAG is a component of chitin, which is the most abundant polysaccharide in the marine environment. Studies of the metabolic regulators Crp¹¹⁴ and NagC^{109,115} suggest that neither glucose nor NAG is amply available to symbionts initiating colonization, and this interpretation seems corroborated by the poor colonization of a NAG auxotroph¹¹³. Interestingly, although the regulatory response of Crp to glucose is consistent with the activity of this regulator in *Escherichia coli*, the influences of NAG and cellobiose on Crp activity are difficult to square with prevailing models, and may suggest selective pressure to decouple responses to NAG and glucose^{19,116}. Although NAG seems to have a minor role during initiation of the symbiosis, the host provisions symbionts with chitin, a source of NAG, later during symbiotic development and presumably for most of the duration of this mutualism¹² (see later).

Energy generation by the symbionts seems to involve a combination of respiratory and fermentative pathways^{104,117}. Bioluminescence requires oxygen, and light output therefore indicates that the symbiont's metabolism is not strictly anaerobic; however, luciferase seems to be oxygen limited at points in the symbiosis, despite its high affinity for this substrate¹¹⁸. These observations and others suggest low-oxygen physiology is important for *V. fischeri* symbionts^{119,120}. The ArcA–ArcB two-component system, which mediates regulatory changes at the transition from respiration to fermentation, contributes to symbiotic competence⁹⁸, whereas the anaerobic regulator Fnr does not¹²¹. *V. fischeri* possesses three terminal oxidases for aerobic respiration: CydAB, CcoNOQP and the unusual haem-independent NO-resistant Aox, each of which may contribute to symbiotic physiology, although the role of CydAB has been difficult to study owing to its importance in growth ex vivo^{104,122}. Trimethylamine *N*-oxide reductases are expressed in the symbiosis, but these anaerobic respiratory chains are not required during initiation of the symbiosis¹²³. Other evidence suggests *V. fischeri* induces fermentative physiology in the light organ, acidifying the environment and notably producing acetate, which the host itself may use^{12,108}. *V. fischeri* along with other members of the genus is capable of rapid growth, which it achieves in the symbiosis⁶⁷, so production of fermentation acids could indicate a form of overflow metabolism that reflects selection for rapid energy

Oxidative redox

Chemical conditions that create an oxidative stress on bacteria.

Auxotrophs

Bacteria that lack the ability to synthesize one or more essential biomolecules.

Cellobiose

Disaccharide composed of glucose.

generation over efficient conversion of resources. Thus, the presence of fermentation products need not reflect a lack of electron acceptors to support respiration.

As with many pathogenic bacteria, in host tissues symbiotic *V. fischeri* cells induce scavenging pathways to obtain essential nutrients such as iron¹²⁴, phosphate¹⁰² and sulfur¹¹⁰. For example, a low-iron response mediated by Fur is induced during colonization, and symbionts use siderophores^{125,126} and scavenge haem¹²⁴ to obtain iron. Interestingly, sources of phosphate¹⁰² and sulfur¹¹⁰ are non-uniformly distributed across light organ microenvironments, illustrating the heterogenous biogeography of these symbiotic tissues. *V. fischeri* may obtain these nutrients at least in part from organic biomolecules such as glycerophosphate^{107,108} and cystine^{7,110} during colonization.

Responses to the host

One of the key characteristics of bacterial symbioses is that, unlike when the bacteria are living outside the host, the surroundings of the microbial partner (that is, host tissues) reciprocally respond to the activities of the symbiont. Furthermore, that response changes depending on the age of the host, health, metabolic state and circadian clock. Because host engagement with the co-evolved mutualistic microbial species, and sometimes even strain, is critical for both partners^{127,128}, there must be effective communication between the partners during the initiation and throughout the persistence of the symbiosis. To achieve this goal in the squid–vibrio association, the host responds to a complex language of chemical signals and cues from *V. fischeri*⁸⁵ (see REF.¹¹), including outer-membrane vesicles^{129,130}, the composition of which is modified in response to low ambient pH¹³¹. Conversely, as in other symbioses¹³², the squid shapes the microenvironments of its symbiont, which reacts by changing its physiology and behaviour.

For example, during the initiation stage of colonization, aggregating *V. fischeri* cells encounter NO and acidic conditions produced within host mucus^{3,55}. Although the levels of these stresses are insufficient to stop colonization, they do prime *V. fischeri* to induce resistance responses to withstand not only these conditions but also host-derived antimicrobial proteins^{133,134} that the symbionts will encounter during their subsequent passage into the crypts^{57,135,136}. In some cases, *V. fischeri* cells seem uniquely capable of responding to this priming¹³⁶, providing a possible mechanism that promotes symbiosis specificity. Importantly, transcriptional analysis of symbiont cells immediately after venting from the juvenile host provides evidence of the conditions they were experiencing in the crypts. Specifically, enzymes involved in resisting oxidative stress and antimicrobial peptides are highly upregulated in these cells¹⁰⁷, which suggests that the symbionts are under physiological stress¹⁰. Having exited the host, the symbionts transition to their planktonic environment by reducing their luminescence and increasing motility, as facilitated by a habitat-transition regulator, HbtR⁷³.

Each day after the morning venting, the remaining symbionts must repopulate the crypts, as well as produce bioluminescence that night. These two energy-intensive

activities are supported by nutrients provided by the host. In the developing juvenile host, little is known about the identity of host-derived organic nutrients, although there is evidence from flux-coupling analysis that glycerolipids (perhaps from host membranes) and amino acids and *N*-acetylneuraminic acid (perhaps from host mucus) are fermented^{7,107}. In addition, the availability of inorganic nutrients^{102,110} and the resulting nature of population growth⁸⁰ differ between crypt populations. In contrast to this biogeographical variation within juvenile light organs, the symbionts in adult light organs experience temporally distinct nutritional conditions depending on the time of day¹⁰⁸. Specifically, during the night, the host supports and enhances bioluminescence by the provision of chitin oligonucleotides^{12,108,119}. In laboratory studies, catabolism of NAG, the chitin monomer, leads to increased production of fermentation products, a lowering of ambient pH and a decrease in respiratory oxygen consumption¹¹⁷. Such conditions in the crypt¹⁰ would be expected to promote higher levels of luminescence production at night, when the squid needs this activity. Thus, the host controls its symbiont's bioluminescence by a temporally restricted nutrient availability. How the host constrains any growth in the bacterial population during this period of intense light emission remains an unresolved question.

Population biology and evolution

It is becoming increasingly clear that strain-level differences (BOX 1) have an important role in establishing symbioses^{18,127,128,137,138}. For instance, phenotypically distinct classes of symbiotic *V. fischeri* isolates exhibited different competitive behaviours during initial colonization of the squid¹³⁹, and genomic characterization of these strains revealed these classes were phylogenetically consistent, and defined a clade of strains with dominant ('D') behaviour⁵¹. Extensive imaging of these D strains as they initiated light organ colonization showed that they often produced hyperaggregates²⁷, and migrated from their aggregates sooner, reaching the crypts more rapidly⁴ than non-D strains. Interestingly, the D-strain clade also contains an additional 250 kb of DNA not found in any other *V. fischeri* strains⁵¹ and these additional 194 open reading frames are distributed in 41 loci ('islets') that are spread across the two chromosomes, unlike in a single locus as is typical for colonization traits on pathogenicity islands (see, for example, REF.¹⁴⁰). This pattern is similar to the scattering of unique loci of a divergent light organ symbiont from the Mediterranean sepiolid squid *Sepiolo robusta*¹⁴¹. As of now, none of these genes has been connected to the D-type behaviour¹⁴². Recent work indicates that strategies for achieving D-type behaviour have evolved independently multiple times in *V. fischeri*¹⁴².

Several studies have sought to understand the evolution of symbiosis competence in the highly specific squid–vibrio symbioses using ecological¹⁴³, comparative genomic¹⁴² or experimental evolution approaches^{45,144}. The last of these was designed to uncover specific mutations that increase the effectiveness of poorly colonizing strains of *V. fischeri*. In one study of two poor colonizers, mutations altering an extracellular polymeric substance

Siderophores

Iron-binding molecules secreted by and taken up by bacteria, thereby providing iron to the cell.

Extracellular polymeric substance

Polysaccharides, proteins and other substances produced and secreted by a bacterium, many of which facilitate cell–cell and/or cell–surface attachment, and that contribute to the biofilm matrix.

Box 2 | Research areas to watch

The next decade promises discoveries across a range of research topics, some examples of which are listed below.

- *Vibrio fischeri* isolate ES114 has been a unifying wild-type strain; however, recent studies have shown the power of comparative strain analyses¹⁴². *V. fischeri* populations naturally compete with one another, driving the evolution of distinct genotypes based on fitness trade-offs that will be identified by strain comparisons and DNA sequencing technology.
- Future research will delve into issues of complex biogeography and diurnal variation, once simplified as 'in the host', using advances in microscopy such as hybridization chain reaction–fluorescence in situ hybridization^{73,167}, transcriptional reporters and methods such as imaging mass spectrometry that enable the identification of molecules in situ.
- New insights into light organ environments enable researchers to better recapitulate relevant conditions *ex vivo*. No medium can reproduce all host conditions, but a systematic adjustment of media and physio-chemical growth conditions to better reflect light organ environments will give culture-based studies more 'real-world' relevance.
- Research on symbiotic *V. fischeri* will benefit from a greater use of computational and bioinformatic approaches. Across biology, mathematical analyses of complex datasets have enabled discoveries in a range of topics, from metabolism to regulatory circuits to the behaviour of cells within populations. Research on the light organ symbiosis is generating molecular and imaging data ripe for such deeper analysis.
- Results from insertion sequencing analysis⁴⁸ remain a cornucopia of testable hypotheses, providing insight into the role of every *V. fischeri* gene with respect to its importance in culture and/or in the symbiosis. This seminal dataset will inform many future studies.
- An understanding of 'global' symbiont gene expression will benefit from the application of nanoString technology, which allows an accurate determination of the average expression levels for hundreds of genes in as few as 10⁵ symbionts.

attenuator, BinK, previously identified in a transposon mutant screen⁴⁴, readily resulted in mutants with improved ability to initiate colonization⁴⁵. Besides an increase in the synthesis of Syp-PS, the mutation caused additional altered phenotypes, including reduced pheromone-signal production and decreased luminescence output. Such pleiotropic mutations may produce fitness trade-offs for the bacterium in other environments¹⁴⁵, a hypothesis that has not been fully tested. In spite of this potential to increase the effectiveness of poorly colonizing strains, the squid–vibrio symbiosis remains notably species specific: to date, there have been no effective efforts to convert other *Vibrio* species into successful colonizers. Thus, with the exception of some strains of the closely related sister species, *Vibrio logei* (also known as *Aliivibrio logei*)¹⁴⁶, *V. fischeri* remains the sole species found colonizing the *E. scolopes* light organ. Interestingly, like other *Vibrio* species, *V. fischeri* has a surprisingly low spontaneous mutation rate that is not uniformly represented around the chromosomes^{147,148}, and identical deletion events resulting in the loss of the entire *lux* operon⁸³ have apparently occurred across different lineages of this symbiont species. Thus, the population biology of *V. fischeri* is driven by both known and unknown evolutionary mechanisms.

A single light organ from a field-caught animal typically is colonized by a few distinct strains¹⁴⁹, yet little is known about their distribution among the crypts owing to the complex biogeography of the mature light organ¹⁵⁰ and the difficulty of identifying different *V. fischeri* strains in a naturally colonized adult. An exciting advance in understanding the dynamic nature of symbiont–strain interactions has resulted from directly imaging the juvenile light organ after colonization by

pairs of *V. fischeri* strains. Earlier work using isogenic strains indicated that although individual crypts are most often colonized by single symbiont cells, ~20% typically develop as co-colonizations¹³⁹. Colonization of the majority of crypts by only a single cell is believed to occur because of a physical 'bottleneck' along the migration pathway that constricts after the first *V. fischeri* cell enters⁸⁰. Thus, it was a surprise when co-colonization experiments involving some strains resulted exclusively in singly colonized crypts¹⁵¹, suggesting a competitive incompatibility between certain strains. Subsequent work revealed that some *V. fischeri* strains encode a second type 6 secretion system (T6SS2) that is lethal to strains that lack this system¹⁵², the expression of which is regulated by environmental viscosity¹⁵³. Carriage of the genes encoding the T6SS2, which includes functionally redundant structural proteins¹⁵⁴, apparently constitutes a trade-off for the bacterium, as such strains have not swept through the light organs of squid populations, and still constitute a minority of symbionts; however, when they co-occur in a crypt, these genes are expressed¹⁵⁵, and the strain prevails. Interestingly, only some of the D strains⁵¹ carry this lethal T6SS2, which is phylogenetically more widespread among *V. fischeri* strains¹⁵², indicating that additional factors contribute to D-strain dominance. Although this discovery is still a new development in *V. fischeri* population dynamics, the announcement of the genome sequences of two T6SS-carrying strains¹⁵⁶ will facilitate the use of comparative genomics approaches to better understand the origin and function of the mechanisms underlying competitive interactions.

Concluding comments

Microbial symbionts can affect essentially all aspects of their host's behaviour, life history and evolution and, in turn, adapt to their partner as a changing but predictable habitat. These processes are likely to occur across the extensive array of microbiomes that have become the subject of study in recent decades, including those of humans; however, the complexity of these associations makes it difficult to examine individual interactions within a cacophonous consortium. By contrast, a naturally binary symbiosis such as the squid–vibrio association has fewer voices in the conversation to decipher, permitting the discovery of novel, but shared, modes and components of a single partner's reciprocal signalling and response to its host^{9,13,14}. Once identified, these same components can often be recognized within the more complex, consortial symbioses, where they underlie mechanisms of health, resilience and homeostasis. Furthermore, new insights are anticipated from applying conceptual and technological advances to the study of this symbiosis (BOX 2). As summarized in this Review, the richness of the interaction between *V. fischeri* and its host is remarkable and continues to provide evidence of the extent to which the two partners have co-evolved, each increasing its fitness as a member of a functioning unit relative to its success living as an individual organism.

Published online: 04 June 2021

1. Koch, E. & McFall-Ngai, M. Model systems for the study of how symbiotic associations between animals and extracellular bacterial partners are established and maintained. *Drug Discov. Today Dis. Models* **28**, 3–12 (2018).
 2. Lee, K. H. & Ruby, E. G. Effect of the squid host on the abundance and distribution of symbiotic *Vibrio fischeri* in nature. *Appl. Environ. Microbiol.* **60**, 1565–1571 (1994).
 3. Kremer, N. et al. Initial symbiont contact orchestrates host-organ-wide transcriptional changes that prime tissue colonization. *Cell Host Microbe* **14**, 183–194 (2013).
 4. Bongrand, C. & Ruby, E. G. Achieving a multi-strain symbiosis: strain behavior and infection dynamics. *ISME J.* **13**, 698–706 (2019).
 5. McFall-Ngai, M. J. The importance of microbes in animal development: lessons from the squid-vibrio symbiosis. *Annu. Rev. Microbiol.* **68**, 177–194 (2014).
 6. Jones, B. W. & Nishiguchi, M. K. Counterillumination in the Hawaiian bobtail squid, *Euprymna scolopes* Berry (Mollusca: Cephalopoda). *Mar. Biol.* **144**, 1151–1155 (2004).
 7. Graf, J. & Ruby, E. G. Host-derived amino acids support the proliferation of symbiotic bacteria. *Proc. Natl Acad. Sci. USA* **95**, 1818–1822 (1998).
 8. McFall-Ngai, M. J. & Ruby, E. G. Developmental biology in marine invertebrate symbioses. *Curr. Opin. Microbiol.* **3**, 603–607 (2000).
 9. Moriano-Gutierrez, S. et al. The noncoding small RNA SsrA is released by *Vibrio fischeri* and modulates critical host responses. *PLoS Biol.* **18**, e3000934 (2020).
 10. Schwartzman, J. A. & Ruby, E. G. Stress as a normal cue in the symbiotic environment. *Trends Microbiol.* **24**, 414–424 (2016).
 11. Nyholm, S. V. & McFall-Ngai, M. J. A lasting symbiosis: how the Hawaiian bobtail squid finds and keeps its bioluminescent bacterial partner. *Nat. Rev. Microbiol.* <https://doi.org/10.1038/s41579-021-00567-y> (2021).
 12. Schwartzman, J. A. et al. The chemistry of negotiation: rhythmic, glycan-driven acidification in a symbiotic conversation. *Proc. Natl Acad. Sci. USA* **112**, 566–571 (2015).
- In this study, the host's delivery of chitin-derived N-acetylglucosamine is shown to develop 4 weeks after hatching, and this chitin is apparently delivered by haemocytes that lyse in the crypts only at night. A nocturnal acidification of the crypts results, and a model for how this outcome enhances bioluminescence is described.**
13. Heath-Heckman, E. A. et al. Bacterial bioluminescence regulates expression of a host cryptochrome gene in the squid-vibrio symbiosis. *mBio* <https://doi.org/10.1128/mBio.00167-13> (2013).
 14. Koropatnick, T. A. et al. Microbial factor-mediated development in a host-bacterial mutualism. *Science* **306**, 1186–1187 (2004).
 15. Bouskra, D. et al. Lymphoid tissue genesis induced by commensals through NOD1 regulates intestinal homeostasis. *Nature* **456**, 507–510 (2008).
 16. Thaiss, C. A. et al. Transkingdom control of microbiota diurnal oscillations promotes metabolic homeostasis. *Cell* **159**, 514–529 (2014).
 17. Ruby, E. G. Symbiotic conversations are revealed under genetic interrogation. *Nat. Rev. Microbiol.* **6**, 752–762 (2008).
 18. Bongrand, C. & Ruby, E. G. The impact of *Vibrio fischeri* strain variation on host colonization. *Curr. Opin. Microbiol.* **50**, 15–19 (2019).
 19. Colton, D. M. & Stabb, E. V. Rethinking the roles of CRP, cAMP, and sugar-mediated global regulation in the *Vibrionaceae*. *Curr. Genet.* **62**, 39–45 (2016).
 20. Mandel, M. J. & Dunn, A. K. Impact and Influence of the natural *Vibrio*-squid symbiosis in understanding bacterial-animal interactions. *Front. Microbiol.* **7**, 1982 (2016).
 21. Aschtgen, M. S. et al. Insights into flagellar function and mechanism from the squid-vibrio symbiosis. *NPJ Biofilms Microbiomes* **5**, 32 (2019).
 22. Stabb, E. V. & Visick, K. L. In *The Prokaryotes* (eds Rosenberg, E., DeLong, E. F., Lory, S., Stackebrandt, E. & Thompson, F.) 497–532 (Springer, 2013).
 23. Nawroth, J. C. et al. Motile cilia create fluid-mechanical microhabitats for the active recruitment of the host microbiome. *Proc. Natl Acad. Sci. USA* **114**, 9510–9516 (2017).
- This work provides the first glimpse into the cilium-driven fluid mechanics that position *V. fischeri* cells to reach and settle in 'quiet zones' on the light**
- organ surface, permitting a selective 'recruitment' of this microorganism from the planktonic environment.**
24. Altura, M. A. et al. The first engagement of partners in the *Euprymna scolopes-Vibrio fischeri* symbiosis is a two-step process initiated by a few environmental symbiont cells. *Environ. Microbiol.* **15**, 2937–2950 (2013).
- Aggregations of only a few *V. fischeri* cells are observed to initiate normal host responses, and reveal that aggregation is a two-part process that begins with bacterial attachment to the cilia.**
25. Nyholm, S. V., Stabb, E. V., Ruby, E. G. & McFall-Ngai, M. J. Establishment of an animal-bacterial association: recruiting symbiotic vibrios from the environment. *Proc. Natl Acad. Sci. USA* **97**, 10231–10235 (2000).
 26. Yip, E. S., Geszvain, K., DeLoney-Marino, C. R. & Visick, K. L. The symbiosis regulator RscS controls the *syg* gene locus, biofilm formation and symbiotic aggregation by *Vibrio fischeri*. *Mol. Microbiol.* **62**, 1586–1600 (2006).
 27. Koehler, S. et al. The model squid-vibrio symbiosis provides a window into the impact of strain- and species-level differences during the initial stages of symbiont engagement. *Environ. Microbiol.* <https://doi.org/10.1111/1462-2920.14392> (2018).
 28. Morris, A. R. & Visick, K. L. Control of biofilm formation and colonization in *Vibrio fischeri*: a role for partner switching? *Environ. Microbiol.* **12**, 2051–2059 (2010).
 29. Norsworthy, A. N. & Visick, K. L. Gimme shelter: how *Vibrio fischeri* successfully navigates an animal's multiple environments. *Front. Microbiol.* **4**, 356 (2013).
 30. Shibata, S., Yip, E. S., Quirke, K. P., Ondrey, J. M. & Visick, K. L. Roles of the structural symbiosis polysaccharide (*syg*) genes in host colonization, biofilm formation, and polysaccharide biosynthesis in *Vibrio fischeri*. *J. Bacteriol.* **194**, 6736–6747 (2012).
 31. Yip, E. S., Grublesky, B. T., Hussa, E. A. & Visick, K. L. A novel, conserved cluster of genes promotes symbiotic colonization and sigma-dependent biofilm formation by *Vibrio fischeri*. *Mol. Microbiol.* **57**, 1485–1498 (2005).
 32. Bassis, C. M. & Visick, K. L. The cyclic-di-GMP phosphodiesterase BinA negatively regulates cellulose-containing biofilms in *Vibrio fischeri*. *J. Bacteriol.* **192**, 1269–1278 (2010).
 33. Chavez-Dozal, A., Hogan, D., Gorman, C., Quintanal-Villalonga, A. & Nishiguchi, M. K. Multiple *Vibrio fischeri* genes are involved in biofilm formation and host colonization. *FEMS Microbiol. Ecol.* **81**, 562–573 (2012).
 34. Tischler, A. H., Lie, L., Thompson, C. M. & Visick, K. L. Discovery of calcium as a biofilm-promoting signal for *Vibrio fischeri* reveals new phenotypes and underlying regulatory complexity. *J. Bacteriol.* **200**, e00016–e00018 (2018).
- This article expands our understanding of the regulatory controls and signals leading to biofilm formation by identifying calcium as a signal that induces a coordinate upregulation of *Syp*- and cellulose-dependent biofilm formation and revealing the sensor kinase HahK as a new biofilm regulator.**
35. Ziemba, C., Shabtai, Y., Piatkovsky, M. & Herzberg, M. Cellulose effects on morphology and elasticity of *Vibrio fischeri* biofilms. *NPJ Biofilms Microbiomes* **2**, 1 (2016).
 36. Ray, V. A., Driks, A. & Visick, K. L. Identification of a novel matrix protein that promotes biofilm maturation in *Vibrio fischeri*. *J. Bacteriol.* **197**, 518–528 (2015).
 37. Shibata, S. & Visick, K. L. Sensor kinase RscS induces the production of antigenically distinct outer membrane vesicles that depend on the symbiosis polysaccharide locus in *Vibrio fischeri*. *J. Bacteriol.* **194**, 185–194 (2012).
 38. Hussa, E. A., Darnell, C. L. & Visick, K. L. RscS functions upstream of SypG to control the *syg* locus and biofilm formation in *Vibrio fischeri*. *J. Bacteriol.* **190**, 4576–4583 (2008).
 39. Mandel, M. J., Wollenberg, M. S., Stabb, E. V., Visick, K. L. & Ruby, E. G. A single regulatory gene is sufficient to alter bacterial host range. *Nature* **458**, 215–218 (2009).
 40. Ray, V. A., Eddy, J. L., Hussa, E. A., Misale, M. & Visick, K. L. The *syg* enhancer sequence plays a key role in transcriptional activation by the sigma54-dependent response regulator SypG and in biofilm formation and host colonization by *Vibrio fischeri*. *J. Bacteriol.* **195**, 5402–5412 (2013).
 41. Visick, K. L. & Skoufos, L. M. Two-component sensor required for normal symbiotic colonization of *Euprymna scolopes* by *Vibrio fischeri*. *J. Bacteriol.* **183**, 835–842 (2001).
 42. Norsworthy, A. N. & Visick, K. L. Signaling between two interacting sensor kinases promotes biofilms and colonization by a bacterial symbiont. *Mol. Microbiol.* **96**, 233–248 (2015).
 43. Thompson, C. M., Marsden, A. E., Tischler, A. H., Koo, J. & Visick, K. L. *Vibrio fischeri* biofilm formation prevented by a trio of regulators. *Appl. Environ. Microbiol.* <https://doi.org/10.1128/AEM.01257-18> (2018).
 44. Brooks, J. F. II & Mandel, M. J. The histidine kinase BinK is a negative regulator of biofilm formation and squid colonization. *J. Bacteriol.* **198**, 2596–2607 (2016).
 45. Pankey, M. S. et al. Host-selected mutations converging on a global regulator drive an adaptive leap by bacteria to symbiosis. *eLife* <https://doi.org/10.7554/eLife.24414> (2017).
- Evolutionary pathways that can lead to symbiotic colonization are revealed in this elegant study that follows the serial passage of a non-colonizing strain through many *E. scolopes* juveniles, resulting in altered, symbiosis-competent strains.**
46. Morris, A. R., Darnell, C. L. & Visick, K. L. Inactivation of a novel response regulator is necessary for biofilm formation and host colonization by *Vibrio fischeri*. *Mol. Microbiol.* **82**, 114–130 (2011).
 47. Morris, A. R. & Visick, K. L. The response regulator SypE controls biofilm formation and colonization through phosphorylation of the *syg*-encoded regulator SypA in *Vibrio fischeri*. *Mol. Microbiol.* **87**, 509–525 (2013).
 48. Brooks, J. F. II et al. Global discovery of colonization determinants in the squid symbiont *Vibrio fischeri*. *Proc. Natl Acad. Sci. USA* **111**, 17284–17289 (2014).
- This large-scale investigation of colonization factors provides important information on genetic requirements for symbiosis and provides a wealth of data for hypothesis generation that will foster many subsequent studies.**
49. Thompson, C. M. & Visick, K. L. Assessing the function of STAS domain protein SypA in *Vibrio fischeri* using a comparative analysis. *Front. Microbiol.* **6**, 760 (2015).
 50. Rotman, E. R. et al. Natural strain variation reveals diverse biofilm regulation in squid-colonizing *Vibrio fischeri*. *J. Bacteriol.* <https://doi.org/10.1128/JB.00033-19> (2019).
 51. Bongrand, C. et al. A genomic comparison of 13 symbiotic *Vibrio fischeri* isolates from the perspective of their host source and colonization behavior. *ISME J.* **10**, 2907–2917 (2016).
- This study of the genomes and behaviours of a collection of a number of squid symbionts propelled the field from the near-exclusive study of a single isolate, ES114, into new and exciting directions with the genomic sequencing of dominant strains that contain numerous additional genetic sequences and factors.**
52. Newell, P. D., Boyd, C. D., Sondermann, H. & O'Toole, G. A. A c-di-GMP effector system controls cell adhesion by inside-out signaling and surface protein cleavage. *PLoS Biol.* **9**, e1000587 (2011).
 53. Christensen, D. G., Marsden, A. E., Hodge-Hanson, K., Essock-Burns, T. & Visick, K. L. LapG mediates biofilm dispersal in *Vibrio fischeri* by controlling maintenance of the VCBS-containing adhesin LapV. *Mol. Microbiol.* **114**, 742–761 (2020).
- This article addresses a major long-standing question concerning the initiation of the light organ association; specifically, how do aggregated *V. fischeri* cells release themselves and migrate into host tissue? One factor may be an adhesin-cleaving protease, which is kept in check by a c-di-GMP-responsive protein, and can promote symbiont dispersal from biofilms.**
54. Fidopiastis, P. M. et al. Characterization of a *Vibrio fischeri* aminopeptidase and evidence for its influence on an early stage of squid colonization. *J. Bacteriol.* **194**, 3995–4002 (2012).
 55. Davidson, S. K., Koropatnick, T. A., Kossmehl, R., Sycuro, L. & McFall-Ngai, M. J. No means 'yes' in the squid-vibrio symbiosis: nitric oxide (NO) during the initial stages of a beneficial association. *Cellul. Microbiol.* **6**, 1139–1151 (2004).
 56. Wang, Y. et al. *Vibrio fischeri* flavohaemoglobin protects against nitric oxide during initiation of the squid-*Vibrio* symbiosis. *Mol. Microbiol.* **78**, 903–915 (2010).

57. Stabb, E. V. Should they stay or should they go? Nitric oxide and the clash of regulators governing *Vibrio fischeri* biofilm formation. *Mol. Microbiol.* **111**, 1–5 (2019).
58. Thompson, C. M., Tischler, A. H., Tarnowski, D. A., Mandel, M. J. & Visick, K. L. Nitric oxide inhibits biofilm formation by *Vibrio fischeri* via the nitric oxide sensor HnxX. *Mol. Microbiol.* **111**, 187–203 (2019). **This publication provides insight into the complex role in symbiosis of the squid-produced defence molecule NO by uncovering its ability to inhibit biofilm formation via the NO sensor HnxX, a finding that suggests that NO may influence the location or timing of biofilm formation and/or promote dispersal during symbiotic initiation.**
59. Singh, P., Brooks, J. F. II, Ray, V. A., Mandel, M. J. & Visick, K. L. CysK plays a role in Biofilm formation and colonization by *Vibrio fischeri*. *Appl. Environ. Microbiol.* **81**, 5223–5234 (2015).
60. Raina, J. B., Fernandez, V., Lambert, B., Stocker, R. & Seymour, J. R. The role of microbial motility and chemotaxis in symbiosis. *Nat. Rev. Microbiol.* **17**, 284–294 (2019).
61. Brennan, C. A., DeLoney-Marino, C. R. & Mandel, M. J. Chemoreceptor VfcA mediates amino acid chemotaxis in *Vibrio fischeri*. *Appl. Environ. Microbiol.* **79**, 1889–1896 (2013).
62. Graf, J., Dunlap, P. V. & Ruby, E. G. Effect of transposon-induced motility mutations on colonization of the host light organ by *Vibrio fischeri*. *J. Bacteriol.* **176**, 6986–6991 (1994).
63. Millikan, D. S. & Ruby, E. G. FlrA, a sigma54-dependent transcriptional activator in *Vibrio fischeri*, is required for motility and symbiotic light-organ colonization. *J. Bacteriol.* **185**, 3547–3557 (2003).
64. Millikan, D. S. & Ruby, E. G. *Vibrio fischeri* flagellin A is essential for normal motility and for symbiotic competence during initial squid light organ colonization. *J. Bacteriol.* **186**, 4515–4525 (2004).
65. Wolfe, A. J., Millikan, D. S., Campbell, J. M. & Visick, K. L. *Vibrio fischeri* sigma54 controls motility, biofilm formation, luminescence, and colonization. *Appl. Environ. Microbiol.* **70**, 2520–2524 (2004).
66. O'Shea, T. M. et al. Magnesium promotes flagellation of *Vibrio fischeri*. *J. Bacteriol.* **187**, 2058–2065 (2005).
67. Ruby, E. G. & Asato, L. M. Growth and flagellation of *Vibrio fischeri* during initiation of the sepiolid squid light organ symbiosis. *Arch. Microbiol.* **159**, 160–167 (1993).
68. Beeby, M. et al. Diverse high-torque bacterial flagellar motors assemble wider stator rings using a conserved protein scaffold. *Proc. Natl Acad. Sci. USA* **113**, E1917–E1926 (2016).
69. Deloney-Marino, C. R. & Visick, K. L. Role for *cheR* of *Vibrio fischeri* in the *Vibrio*-squid symbiosis. *Can. J. Microbiol.* **58**, 29–38 (2012).
70. Ruby, E. G. et al. Complete genome sequence of *Vibrio fischeri*: a symbiotic bacterium with pathogenic congeners. *Proc. Natl Acad. Sci. USA* **102**, 3004–3009 (2005).
71. Nikolakakis, K., Monfils, K., Moriano-Gutierrez, S., Brennan, C. A. & Ruby, E. G. Characterization of the *Vibrio fischeri* fatty acid chemoreceptors, VfcB and VfcB2. *Appl. Environ. Microbiol.* **82**, 696–704 (2015).
72. Mandel, M. J. et al. Squid-derived chitin oligosaccharides are a chemotactic signal during colonization by *Vibrio fischeri*. *Appl. Environ. Microbiol.* **78**, 4620–4626 (2012). **While it was long-expected that *V. fischeri* might sense and be attracted to squid-produced molecules to facilitate directed migration into the light organ crypts, this work is the first to identify squid-produced molecules, chitin oligosaccharides, that function as a chemotactic signal promoting colonization.**
73. Bennett, B. D., Essock-Burns, T. & Ruby, E. G. HbtR, a heterofunctional homolog of the virulence regulator TcpP, facilitates the transition between symbiotic and planktonic lifestyles in *Vibrio fischeri*. *mBio* <https://doi.org/10.1128/mBio.01624-20> (2020). **Comparisons of *V. fischeri* with the related pathogen *Vibrio cholerae* reveal that a regulator conserved among *Vibrio* spp. plays very different roles in the interactions of these two microorganisms with their respective hosts.**
74. Brennan, C. A. et al. A model symbiosis reveals a role for sheathed-flagellum rotation in the release of immunogenic lipopolysaccharide. *eLife* **3**, e01579 (2014). **A surprising role for flagellar rotation in the release of lipopolysaccharide molecules that promote squid development is revealed in this work, providing a novel function for the flagellar sheath.**
75. Stabb, E. V. & Millikan, D. S. in *Defensive Mutualism in Microbial Symbiosis* Vol. 27 (eds White, J. F. & Torres, M. S. J.) 85–98 (CRC Press, 2009).
76. Bose, J. L., Rosenberg, C. S. & Stabb, E. V. Effects of *luxCDABEG* induction in *Vibrio fischeri*: enhancement of symbiotic colonization and conditional attenuation of growth in culture. *Arch. Microbiol.* **190**, 169–183 (2008).
77. Visick, K. L., Foster, J., Doino, J., McFall-Ngai, M. & Ruby, E. G. *Vibrio fischeri lux* genes play an important role in colonization and development of the host light organ. *J. Bacteriol.* **182**, 4578–4586 (2000).
78. Verma, S. C. & Miyashiro, T. Niche-specific impact of a symbiotic function on the persistence of microbial symbionts within a natural host. *Appl. Environ. Microbiol.* **82**, 5990–5996 (2016).
79. Dunn, A. K., Millikan, D. S., Adin, D. M., Bose, J. L. & Stabb, E. V. New *rfp*- and *pES213*-derived tools for analyzing symbiotic *Vibrio fischeri* reveal patterns of infection and *lux* expression *in situ*. *Appl. Environ. Microbiol.* **72**, 802–810 (2006).
80. Essock-Burns, T., Bongrand, C., Goldman, W. E., Ruby, E. G. & McFall-Ngai, M. J. Interactions of symbiotic partners drive the development of a complex biogeography in the squid-vibrio symbiosis. *mBio* **11**, e00853-20 (2020).
81. Sycuro, L. K., Ruby, E. G. & McFall-Ngai, M. Confocal microscopy of the light organ crypts in juvenile *Euprymna scolopes* reveals their morphological complexity and dynamic function in symbiosis. *J. Morphol.* **267**, 555–568 (2006).
82. Koch, E. J., Miyashiro, T., McFall-Ngai, M. J. & Ruby, E. G. Features governing symbiont persistence in the squid-vibrio association. *Mol. Ecol.* **23**, 1624–1634 (2014).
83. Wollenberg, M. S., Preheim, S. P., Polz, M. F. & Ruby, E. G. Polyphyly of non-bioluminescent *Vibrio fischeri* sharing a *lux*-locus deletion. *Environ. Microbiol.* **14**, 655–668 (2012).
84. Chun, C. K. et al. Effects of colonization, luminescence, and autoinducer on host transcription during development of the squid-vibrio association. *Proc. Natl Acad. Sci. USA* **105**, 11323–11328 (2008).
85. McFall-Ngai, M., Heath-Heckman, E. A., Gillette, A. A., Peyer, S. M. & Harvie, E. A. The secret languages of coevolved symbioses: insights from the *Euprymna scolopes*-*Vibrio fischeri* symbiosis. *Semin. Immunol.* **24**, 3–8 (2012).
86. Moriano-Gutierrez, S. et al. Critical symbiont signals drive both local and systemic changes in diel and developmental host gene expression. *Proc. Natl Acad. Sci. USA* **116**, 7990–7999 (2019).
87. Verma, S. C. & Miyashiro, T. Quorum sensing in the squid-*Vibrio* symbiosis. *Int. J. Mol. Sci.* **14**, 16386–16401 (2013).
88. Stabb, E. V., Schaefer, A., Bose, J. L. & Ruby, E. G. in *Chemical Communication Among Bacteria* (eds Winans, S. C. & Bassler, B. L.) 233–250 (ASM Press, 2008).
89. Lupp, C. & Ruby, E. G. *Vibrio fischeri* uses two quorum-sensing systems for the regulation of early and late colonization factors. *J. Bacteriol.* **187**, 3620–3629 (2005).
90. Kimbrough, J. H. & Stabb, E. V. Comparative analysis reveals regulatory motifs at the *ainS/ainR* pheromone-signaling locus of *Vibrio fischeri*. *Sci. Rep.* **7**, 11734 (2017).
91. Kimbrough, J. H. & Stabb, E. V. Substrate specificity and function of the pheromone receptor AinR in *Vibrio fischeri* ES114. *J. Bacteriol.* **195**, 5223–5232 (2013).
92. Studer, S. V., Mandel, M. J. & Ruby, E. G. AinS quorum sensing regulates the *Vibrio fischeri* acetate switch. *J. Bacteriol.* **190**, 5915–5923 (2008).
93. Cao, X. et al. The novel sigma factor-like regulator RpoQ controls luminescence, chitinase activity, and motility in *Vibrio fischeri*. *mBio* <https://doi.org/10.1128/mBio.00285-11> (2012).
94. Studer, S. V. et al. Non-native acylated homoserine lactones reveal that LuxR quorum sensing promotes symbiont stability. *Environ. Microbiol.* **16**, 2623–2634 (2014).
95. Boettcher, K. J. & Ruby, E. G. Depressed light emission by symbiotic *Vibrio fischeri* of the sepiolid squid *Euprymna scolopes*. *J. Bacteriol.* **172**, 3701–3706 (1990).
96. Septer, A. N. & Stabb, E. V. Coordination of the *arc* regulatory system and pheromone-mediated positive feedback in controlling the *Vibrio fischeri lux* operon. *PLoS ONE* **7**, e49590 (2012).
97. Stabb, E. V. Could positive feedback enable bacterial pheromone signaling to coordinate behaviors in response to heterogeneous environmental cues? *mBio* <https://doi.org/10.1128/mBio.00098-18> (2018).
98. Bose, J. L. et al. Bioluminescence in *Vibrio fischeri* is controlled by the redox-responsive regulator ArcA. *Mol. Microbiol.* **65**, 538–553 (2007).
99. Lyell, N. L. et al. Cyclic AMP receptor protein regulates pheromone-mediated bioluminescence at multiple levels in *Vibrio fischeri* ES114. *J. Bacteriol.* **195**, 5051–5063 (2013).
100. Lyell, N. L., Dunn, A. K., Bose, J. L. & Stabb, E. V. Bright mutants of *Vibrio fischeri* ES114 reveal conditions and regulators that control bioluminescence and expression of the *lux* operon. *J. Bacteriol.* **192**, 5103–5114 (2010).
101. Septer, A. N., Lyell, N. L. & Stabb, E. V. The iron-dependent regulator *fur* controls pheromone signaling systems and luminescence in the squid symbiont *Vibrio fischeri* ES114. *Appl. Environ. Microbiol.* **79**, 1826–1834 (2013).
102. Stoudenmire, J. L. et al. An iterative, synthetic approach to engineer a high-performance PhoB-specific reporter. *Appl. Environ. Microbiol.* <https://doi.org/10.1128/AEM.00603-18> (2018). **This study not only provides a road map for synthetic promoter engineering in *V. fischeri* but also uncovers evidence for possible microenvironments present within different crypts of the *E. scolopes* light organ.**
103. Bose, J. L. et al. Contribution of rapid evolution of the *luxR-luxI* intergenic region to the diverse bioluminescence outputs of *Vibrio fischeri* strains isolated from different environments. *Appl. Environ. Microbiol.* **77**, 2445–2457 (2011).
104. Dunn, A. K. *Vibrio fischeri* metabolism: symbiosis and beyond. *Adv. Microb. Physiol.* **61**, 37–68 (2012).
105. Schwartzman, J. A. & Ruby, E. G. A conserved chemical dialog of mutualism: lessons from squid and vibrio. *Microbes Infect.* **18**, 1–10 (2016).
106. Pan, S. et al. Model-enabled gene search (MEGS) allows fast and direct discovery of enzymatic and transport gene functions in the marine bacterium *Vibrio fischeri*. *J. Biol. Chem.* **292**, 10250–10261 (2017).
107. Thompson, L. R. et al. Transcriptional characterization of *Vibrio fischeri* during colonization of juvenile *Euprymna scolopes*. *Environ. Microbiol.* **19**, 1845–1856 (2017).
108. Wier, A. M. et al. Transcriptional patterns in both host and bacterium underlie a daily rhythm of anatomical and metabolic change in a beneficial symbiosis. *Proc. Natl Acad. Sci. USA* **107**, 2259–2264 (2010). **In the first dual transcriptional study of an animal host and its symbionts, gene expression in both partners is shown to be regulated over a day-night cycle, revealing a daily remodelling of the crypt epithelial cells and a night-time provision of chitin to the symbionts.**
109. Sun, Y., Verma, S. C., Bogale, H. & Miyashiro, T. NagC represses *N*-acetyl-glucosamine utilization genes in *Vibrio fischeri* within the light organ of *Euprymna scolopes*. *Front. Microbiol.* **6**, 741 (2015).
110. Wasilko, N. P. et al. Sulfur availability for *Vibrio fischeri* growth during symbiosis establishment depends on biogeography within the squid light organ. *Mol. Microbiol.* **111**, 621–636 (2019). **This study sheds light on both the nutritional adaptability of *V. fischeri* and the complex biogeography of the light organ by demonstrating that this symbiont uses different sulfur sources within different regions of the light organ.**
111. Septer, A. N. et al. Bright luminescence of *Vibrio fischeri* aconitase mutants reveals a connection between citrate and the Gac/Csr regulatory system. *Mol. Microbiol.* **95**, 283–296 (2015).
112. Lyell, N. L. & Stabb, E. V. Symbiotic characterization of *Vibrio fischeri* ES114 mutants that display enhanced luminescence in culture. *Appl. Environ. Microbiol.* **79**, 2480–2483 (2013).
113. Lyell, N. L. et al. An expanded transposon mutant library reveals that *Vibrio fischeri* delta-aminolevulinatase auxotrophs can colonize *Euprymna scolopes*. *Appl. Environ. Microbiol.* <https://doi.org/10.1128/AEM.02470-16> (2017).
114. Colton, D. M., Stoudenmire, J. L. & Stabb, E. V. Growth on glucose decreases cAMP-CRP activity while paradoxically increasing intracellular cAMP in the light-organ symbiont *Vibrio fischeri*. *Mol. Microbiol.* **97**, 1114–1127 (2015).
115. Miyashiro, T. et al. The *N*-acetyl-D-glucosamine repressor NagC of *Vibrio fischeri* facilitates

- colonization of *Euprymna scolopes*. *Mol. Microbiol.* **82**, 894–903 (2011).
116. Adin, D. M., Visick, K. L. & Stabb, E. V. Identification of a cellobiose utilization gene cluster with cryptic beta-galactosidase activity in *Vibrio fischeri*. *Appl. Environ. Microbiol.* **74**, 4059–4069 (2008).
 117. Pan, M., Schwartzman, J. A., Dunn, A. K., Lu, Z. & Ruby, E. G. A single host-derived glycan impacts key regulatory nodes of symbiont metabolism in a coevolved mutualism. *mBio* **6**, e00811 (2015).
 118. Boettcher, K. J., McFall-Ngai, M. J. & Ruby, E. G. Bioluminescence in the symbiotic squid *Euprymna scolopes* is controlled by a daily biological rhythm. *J. Comp. Physiol.* **179**, 65–73 (1996).
 119. Kremer, N. et al. The dual nature of haemocyanin in the establishment and persistence of the squid-vibrio symbiosis. *Proc. Biol. Sci.* **281**, 20140504 (2014).
 120. Stabb, E. V. Shedding light on the bioluminescence “paradox”. *ASM News* **71**, 223–229 (2005).
 121. Septer, A. N., Bose, J. L., Dunn, A. K. & Stabb, E. V. FNR-mediated regulation of bioluminescence and anaerobic respiration in the light-organ symbiont *Vibrio fischeri*. *FEMS Microbiol. Lett.* **306**, 72–81 (2010).
 122. Dunn, A. K. Alternative oxidase activity reduces stress in *Vibrio fischeri* cells exposed to nitric oxide. *J. Bacteriol.* <https://doi.org/10.1128/JB.00797-17> (2018).
 123. Dunn, A. K. & Stabb, E. V. Genetic analysis of trimethylamine *N*-oxide reductases in the light organ symbiont *Vibrio fischeri* ES114. *J. Bacteriol.* **190**, 5814–5823 (2008).
 124. Septer, A. N., Wang, Y., Ruby, E. G., Stabb, E. V. & Dunn, A. K. The haem-uptake gene cluster in *Vibrio fischeri* is regulated by Fur and contributes to symbiotic colonization. *Environ. Microbiol.* **13**, 2855–2864 (2011).
 125. Graf, J. & Ruby, E. G. Novel effects of a transposon insertion in the *Vibrio fischeri* *glnD* gene: defects in iron uptake and symbiotic persistence in addition to nitrogen utilization. *Mol. Microbiol.* **37**, 168–179 (2000).
 126. Eickhoff, M. J. & Bassler, B. L. *Vibrio fischeri* siderophore production drives competitive exclusion during dual-species growth. *Mol. Microbiol.* **114**, 244–261 (2020).
 127. Ferretti, P. et al. Mother-to-infant microbial transmission from different body sites shapes the developing infant gut microbiome. *Cell Host Microbe* **24**, 135–145 e135 (2018).
 128. Zheng, H. et al. Division of labor in honey bee gut microbiota for plant polysaccharide digestion. *Proc. Natl Acad. Sci. USA* **116**, 25909–25916 (2019).
 129. Aschtgen, M. S. et al. Rotation of *Vibrio fischeri* flagella produces outer membrane vesicles that induce host development. *J. Bacteriol.* **198**, 2156–2165 (2016).
 130. Aschtgen, M. S., Wetzal, K., Goldman, W., McFall-Ngai, M. & Ruby, E. *Vibrio fischeri*-derived outer membrane vesicles trigger host development. *Cell. Microbiol.* **18**, 488–499 (2016).
 131. Lynch, J. B. et al. Ambient pH alters the protein content of outer membrane vesicles, driving host development in a beneficial symbiosis. *J. Bacteriol.* <https://doi.org/10.1128/JB.00319-19> (2019).
 132. Franzenburg, S. et al. Distinct antimicrobial peptide expression determines host species-specific bacterial associations. *Proc. Natl Acad. Sci. USA* **110**, E3730–E3738 (2013).
 133. Chen, F. et al. Bactericidal permeability-increasing proteins shape host-microbe interactions. *mBio* **8**, e00040-17 (2017).
 134. Heath-Heckman, E. A. et al. Shaping the microenvironment: evidence for the influence of a host galaxin on symbiont acquisition and maintenance in the squid-*Vibrio* symbiosis. *Environ. Microbiol.* **16**, 3669–3682 (2014).
 135. Wang, Y. et al. H-NOX-mediated nitric oxide sensing modulates symbiotic colonization by *Vibrio fischeri*. *Proc. Natl Acad. Sci. USA* **107**, 8375–8380 (2010).
 136. Schwartzman, J. A. et al. Acidic pH promotes lipopolysaccharide modification and alters colonization in a bacteria-animal mutualism. *Mol. Microbiol.* **112**, 1326–1338 (2019).
 137. Kwong, W. K. & Moran, N. A. Gut microbial communities of social bees. *Nat. Rev. Microbiol.* **14**, 374–384 (2016).
 138. Murfin, K. E. et al. *Xenorhabdus bovienii* strain diversity impacts coevolution and symbiotic maintenance with *Steinernema* spp. nematode hosts. *mBio* **6**, e00076 (2015).
 139. Wollenberg, M. S. & Ruby, E. G. Population structure of *Vibrio fischeri* within the light organs of *Euprymna scolopes* squid from two Oahu (Hawaii) populations. *Appl. Environ. Microbiol.* **75**, 193–202 (2009). **This is the first comparative genome-level study of light organ symbionts both between and within adult squid, suggesting that on average each crypt of an organ is colonized by one or two *V. fischeri* cells, potentially creating crypt-separated, clonal lineages within a polyclonal organ.**
 140. Tomich, M., Planet, P. J. & Figurski, D. H. The *tad* locus: postcards from the widespread colonization island. *Nat. Rev. Microbiol.* **5**, 363–375 (2007).
 141. Gyllborg, M. C., Sahl, J. W., Cronin, D. C. III., Rasko, D. A. & Mandel, M. J. Draft genome sequence of *Vibrio fischeri* SR5, a strain isolated from the light organ of the Mediterranean squid *Sepiolo robusta*. *J. Bacteriol.* **194**, 1639 (2012).
 142. Bongrand, C. et al. Using colonization assays and comparative genomics to discover symbiosis behaviors and factors in *Vibrio fischeri*. *mBio* <https://doi.org/10.1128/mBio.03407-19> (2020).
 143. Coryell, R. L. et al. Phylogeographic patterns in the Philippine archipelago influence symbiont diversity in the bobtail squid-*Vibrio* mutualism. *Ecol. Evol.* **8**, 7421–7435 (2018).
 144. Soto, W., Rivera, F. M. & Nishiguchi, M. K. Ecological diversification of *Vibrio fischeri* serially passaged for 500 generations in novel squid host *Euprymna tasmannica*. *Microb. Ecol.* **67**, 700–721 (2014).
 145. Soto, W., Travisano, M., Tolleson, A. R. & Nishiguchi, M. K. Symbiont evolution during the free-living phase can improve host colonization. *Microbiology* **165**, 174–187 (2019).
 146. Fidopiastis, P. M., von Boletzky, S. & Ruby, E. G. A new niche for *Vibrio logei*, the predominant light organ symbiont of squids in the genus *Sepiolo*. *J. Bacteriol.* **180**, 59–64 (1998).
 147. Dillon, M. M., Sung, W., Lynch, M. & Cooper, V. S. Periodic variation of mutation rates in bacterial genomes associated with replication timing. *mBio* <https://doi.org/10.1128/mBio.01371-18> (2018).
 148. Dillon, M. M., Sung, W., Sebra, R., Lynch, M. & Cooper, V. S. Genome-wide biases in the rate and molecular spectrum of spontaneous mutations in *Vibrio cholerae* and *Vibrio fischeri*. *Mol. Biol. Evol.* **34**, 93–109 (2017).
 149. Wollenberg, M. S. & Ruby, E. G. Phylogeny and fitness of *Vibrio fischeri* from the light organs of *Euprymna scolopes* in two Oahu, Hawaii populations. *ISME J.* **6**, 352–362 (2012).
 150. Koch, E. J. et al. The cytokine MIF controls daily rhythms of symbiont nutrition in an animal-bacterial association. *Proc. Natl Acad. Sci. USA* **117**, 27578–27586 (2020).
 151. Sun, Y. et al. Intraspecific competition impacts *Vibrio fischeri* strain diversity during initial colonization of the squid light organ. *Appl. Environ. Microbiol.* **82**, 3082–3091 (2016).
 152. Speare, L. et al. Bacterial symbionts use a type VI secretion system to eliminate competitors in their natural host. *Proc. Natl Acad. Sci. USA* **115**, E8528–E8537 (2018). **The finding that *V. fischeri* engages in biological ‘warfare’ to become the sole colonizer of a given crypt has provided new insight into the dynamics and processes controlling light organ population structure and strain competition in nature.**
 153. Speare, L., Smith, S., Salvato, F., Kleiner, M. & Septer, A. N. Environmental viscosity modulates interbacterial killing during habitat transition. *mBio* <https://doi.org/10.1128/mBio.03060-19> (2020).
 154. Guckes, K. R. et al. Incompatibility of *Vibrio fischeri* strains during symbiosis establishment depends on two functionally redundant *hcp* genes. *J. Bacteriol.* <https://doi.org/10.1128/JB.00221-19> (2019).
 155. Guckes, K. R., Cecere, A. G., Williams, A. L., McNeil, A. E. & Miyashiro, T. The bacterial enhancer binding protein VasH promotes expression of a Type VI secretion system in *Vibrio fischeri* during symbiosis. *J. Bacteriol.* <https://doi.org/10.1128/JB.00777-19> (2020).
 156. Bultman, K. M., Cecere, A. G., Miyashiro, T., Septer, A. N. & Mandel, M. J. Draft genome sequences of type VI secretion system-encoding *Vibrio fischeri* strains FQ-A001 and ES401. *Microbiol. Resour. Announc.* <https://doi.org/10.1128/MRA.00385-19> (2019).
 157. Doino, J. A. & McFall-Ngai, M. J. A transient exposure to symbiosis-competent bacteria induces light organ morphogenesis in the host squid. *Biol. Bull.* **189**, 347–355 (1995).
 158. Dunn, A. K., Martin, M. O. & Stabb, E. V. Characterization of pES213, a small mobilizable plasmid from *Vibrio fischeri*. *Plasmid* **54**, 114–134 (2005).
 159. Lyell, N. L., Dunn, A. K., Bose, J. L., Vescovi, S. L. & Stabb, E. V. Effective mutagenesis of *Vibrio fischeri* by using hyperactive mini-Tn5 derivatives. *Appl. Environ. Microbiol.* **74**, 7059–7063 (2008).
 160. Stoudenmire, J. L., Black, M., Fidopiastis, P. M. & Stabb, E. V. Mutagenesis of *Vibrio fischeri* and other marine bacteria using hyperactive mini-Tn5 derivatives. *Methods Mol. Biol.* **2016**, 87–104 (2019).
 161. Pollack-Berti, A., Wollenberg, M. S. & Ruby, E. G. Natural transformation of *Vibrio fischeri* requires *tfxX* and *tfxY*. *Environ. Microbiol.* **12**, 2302–2311 (2010).
 162. Visick, K. L., Hodge-Hanson, K. M., Tischler, A. H., Bennett, A. K. & Mastrodomenico, V. Tools for rapid genetic engineering of *Vibrio fischeri*. *Appl. Environ. Microbiol.* <https://doi.org/10.1128/AEM.00850-18> (2018).
 163. Burgos, H. L. et al. Multiplexed competition in a synthetic squid light organ microbiome using barcode-tagged gene deletions. *mSystems* **5**, e00846-20 (2020).
 164. Brooks, J. F. II, Gyllborg, M. C., Kocher, A. A., Markey, L. E. & Mandel, M. J. TfxX-based genetic mapping identifies *Vibrio fischeri* strain-level differences and reveals a common lineage of laboratory strains. *J. Bacteriol.* **197**, 1065–1074 (2015).
 165. Califano, G. et al. Draft genome sequence of *Allivibrio fischeri* strain 5LC, a bacterium retrieved from gilthead seabream (*Sparus aurata*) larvae reared in aquaculture. *Genome Announc.* **3**, e00593-15 (2015).
 166. Hehemann, J.-H. et al. Adaptive radiation by waves of gene transfer leads to fine-scale resource partitioning in marine microbes. *Nat. Commun.* **7**, 12860 (2016).
 167. Nikolakakis, K., Lehnert, E., McFall-Ngai, M. J. & Ruby, E. G. Use of hybridization chain reaction-fluorescent *in situ* hybridization to track gene expression by both partners during initiation of symbiosis. *Appl. Environ. Microbiol.* **81**, 4728–4735 (2015).

Acknowledgements

The authors thank M. McFall-Ngai and S. V. Nyholm for helpful comments about the manuscript. Work in the authors' laboratories is supported by US National Institutes of Health grants R37 AI050661 (E.G.R.), R01 GM135254 (E.G.R.), R01 OD011024 (E.G.R.) and R35 GM130355 (K.L.V.) and by US National Science Foundation grant MCB-1716232 (E.V.S.).

Author contributions

The authors contributed equally to all aspects of the article.

Competing interests

The authors declare no competing interests.

Peer review information

Nature Reviews Microbiology thanks T. Bosch, who co-reviewed with C. Giez, and the other, anonymous, reviewer(s) for their contribution to the peer review of this work.

Publisher's note

Springer Nature remains neutral with regard to jurisdictional claims in published maps and institutional affiliations.

© Springer Nature Limited 2021